

**IMMEDIATELY REPORT ANY OF THE FOLLOWING SYMPTOMS TO YOUR DOCTOR:**

**(Close the clamp on the pump tubing to stop the infusion.)**

- Increase in pain
- Redness, warmth, swelling, pain, major bruising and/or discharge at or near the catheter site
- Dizziness
- Light-headedness
- Blurred vision
- Ringing or buzzing in your ears
- Metal taste in your mouth
- Numbness and/or tingling around your mouth, fingers or toes
- Nausea or vomiting
- Drowsiness
- Confusion
- Other: \_\_\_\_\_

**NUMBNESS**

Be aware that you may experience loss of feeling at and around the surgical area. If numbness occurs, take proper measures to avoid injury.

**PRECAUTIONS**

- Do not reuse.
- Do not microwave.
- Protect pump and catheter site from water according to your doctor's instructions.

**MEDICATION**

Medication: \_\_\_\_\_

Concentration: \_\_\_\_\_

**APPROXIMATE DATE INFUSION WILL BE COMPLETED**

\_\_\_\_\_

**CONTACT YOUR DOCTOR FOR ALL MEDICAL QUESTIONS**

Doctor: \_\_\_\_\_

Phone: \_\_\_\_\_

**NEXT APPOINTMENT**

Date: \_\_\_\_\_

Time: \_\_\_\_\_

**SPECIAL INSTRUCTIONS**

\_\_\_\_\_  
\_\_\_\_\_  
\_\_\_\_\_



Solace® is distributed by Zone Medical, LLC

**Zone Medical, LLC**

10064 Mesa Ridge Court, Suite 200  
San Diego, California 92121  
858-492-8570 Telephone  
858-605-5919 Fax  
info@zonemedical.net  
www.zonemedical.net

**CAUTION: Federal Law (USA) restricts this device to sale by or on the order of a physician.**

U.S. Patents: 6,329,444; 6,569,375; 6,920,643  
U.S. Patents Pending.

Solace is a registered trademark of Zone Medical, LLC  
© 2007 Zne Medical all rights reserved worldwide



**Patient Guidelines**



LATEX-FREE

## Patient Guidelines

### Solace Post-Operative Pain Relief Infusion System

The Solace™ Infusion System includes a single use elastomeric type pump filled with medication to treat your post-operative pain. The Solace pump is attached to one or two catheters which lead to your surgical site. These catheters deliver medication to your surgical site where it is needed to treat your pain.

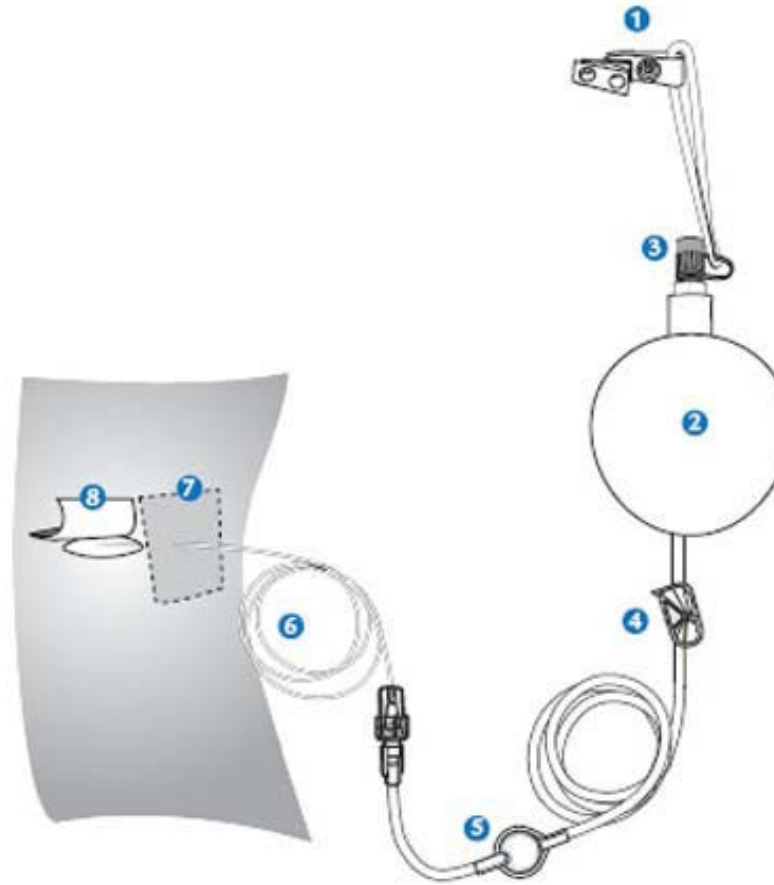
The Solace Infusion System treats pain locally, at the site of your surgery, and may provide better pain relief than taking narcotic type medicine alone. This may allow you to take less pain medicine.

### In-Use

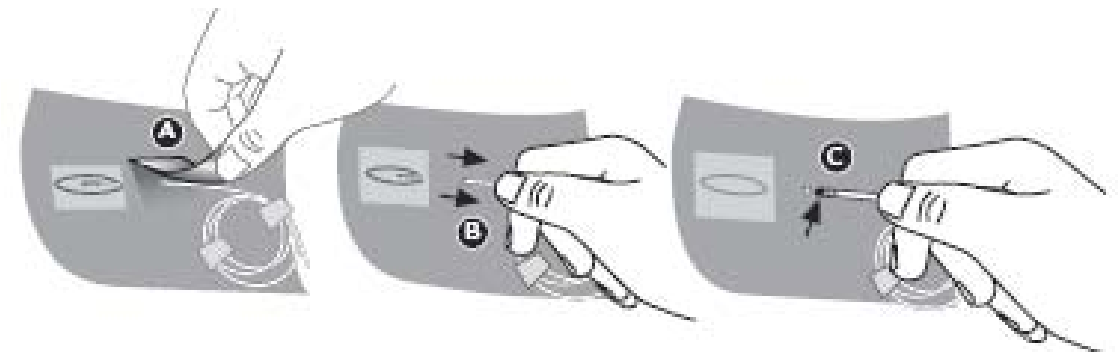
The pump is portable and can be carried with you during normal post-surgical activities by using the supplied clip or a carrying case. As the pump slowly delivers medicine, it gradually becomes smaller in size. This change is hardly noticeable. Do not squeeze the pump in an attempt to force the medicine out faster. The Solace pump has enough force to deliver your medicine.

- It may take more than 24 hours after your surgery to notice a change in the size of your pump.
- You will not see a fluid line in the pump or the medicine flowing through the tubing.

- 1 Clip
- 2 Solace Pump
- 3 Fill Port
- 4 Clamp
- 5 Filter
- 6 Catheter
- 7 Dressing (not included)
- 8 Surgical Wound Site



- You should also take any pain medication as instructed by your doctor.
- Ensure the white clamp is open (it moves freely along the pump tubing).
- Ensure that there are no kinks in the tubing.
- If you are using cold therapy or ice, place it away from pump and tubing.
- Do not tape or cover the filter.



### Catheter Removal

After all of the medicine has been delivered to your body, a hard plastic ball can be felt in direct contact with the elastomeric bladder inside the deflated pump. Infusion is then complete and it is time to remove the catheter. Follow your doctor's instructions on removing the catheter but keep the following steps in mind:

- Remove the dressing from the catheter site. **A**
- Grasp the catheter close to the skin and gently attempt to slide it from the skin. If it is difficult or painful to remove or begins to stretch, stop and call your doctor. **B**
- Do not cut or pull hard to remove the catheter.
- After you remove the catheter, check the catheter tip for a black marking. If you do not see a black marking, call your doctor. **C**
- Place a bandage over the catheter insertion site.
- Repeat catheter removal procedure for other sites if you have more than one catheter.

Call your doctor if you have redness, warmth, pain, swelling or major bruising at or near the wound site.